

ORACLE®

Und wie teste ich jetzt die Funktionalität und Performance ?

<Speaker>

Oracle Deutschland B.V. & Co. KG



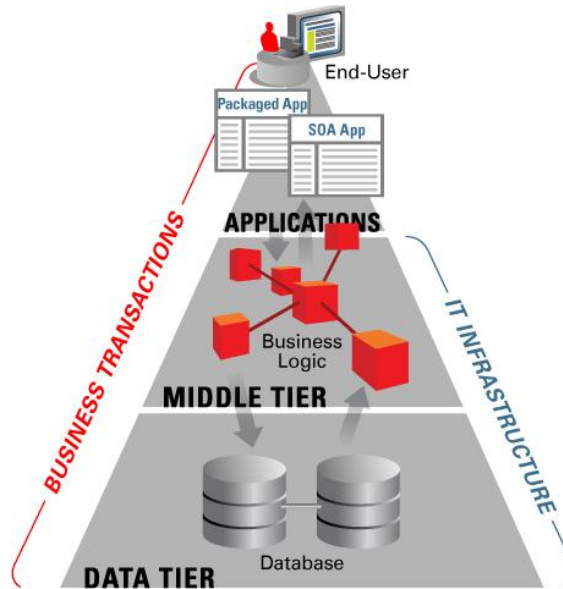
Übersicht Anwendungsmanagement

Application Operations Management

Real User Experience Monitoring

Middleware Management
JVM Diagnostic

Diagnostic & Tuning



Application Quality Management

Application Testing Suite

- Testmanagement
- Funktionales Testen
- Lasttests

Application Replay Pack

Data Masking

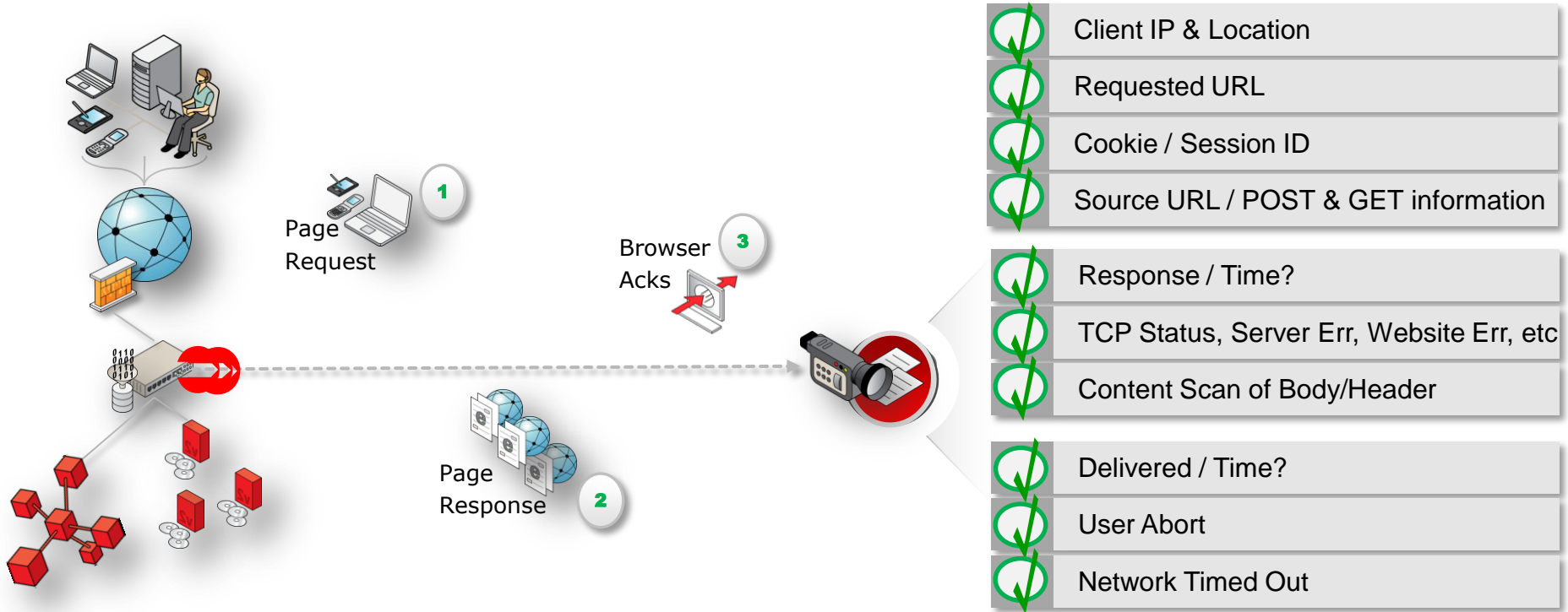
Test Data Management
Real Application Testing



Monitoring von Forms- und anderen Web-Applikationen

Real User Experience Insight (RUEI)

Aufzeichnen der Netzwerk-Aktivität



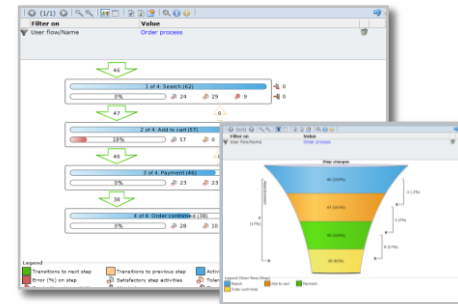
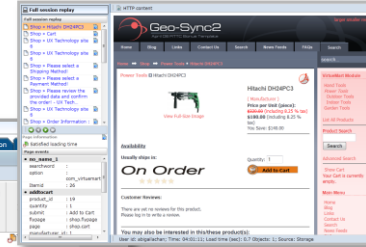
Real User Experience Insight (RUEI)

Auswertungen

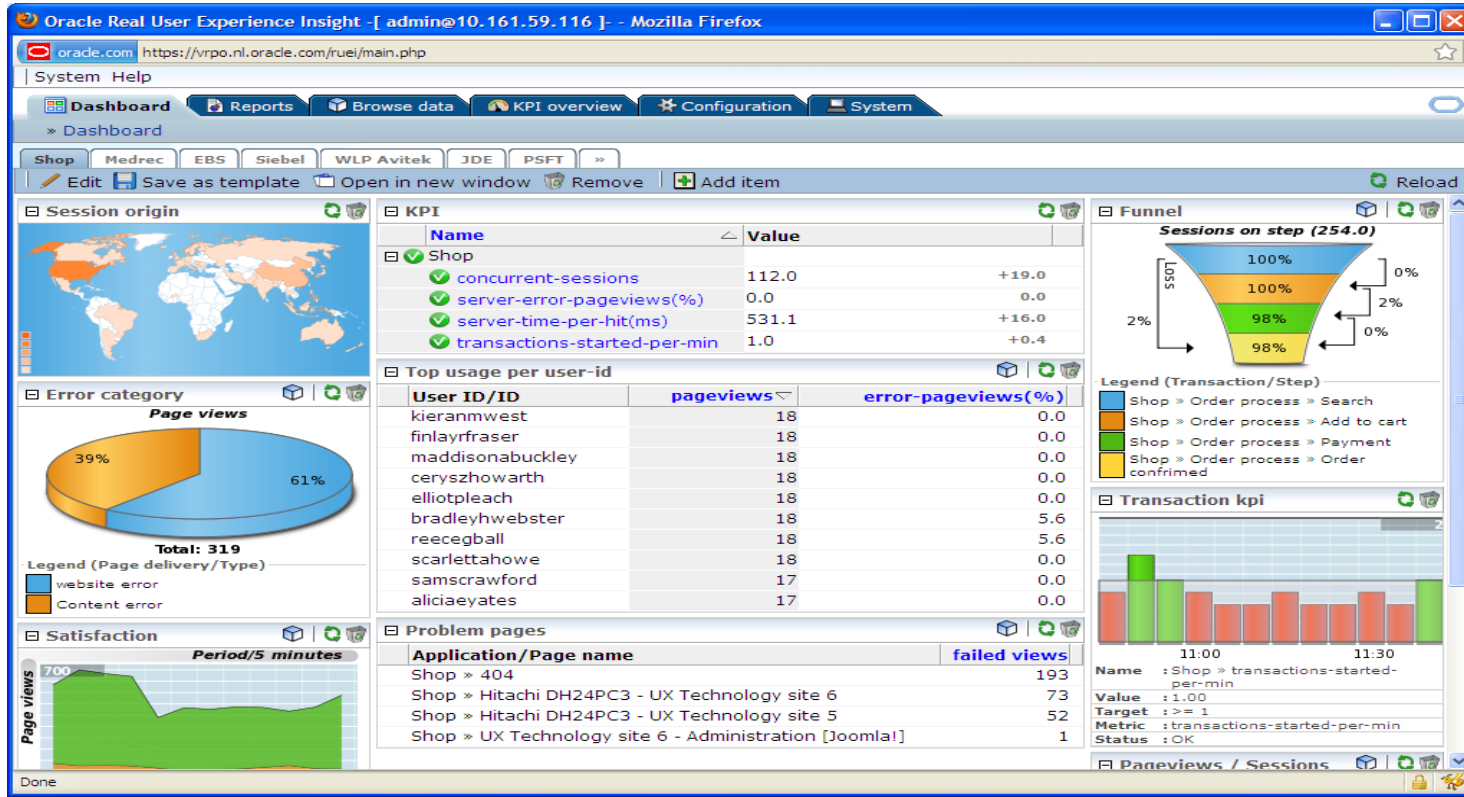
- Standort-bezogene Auswertungen
- Dashboards
- Überwachung von KPI und SLA
- Alerts
- Abspielen von Benutzer-Sessions
- Performance-Analysen von Prozessen
- Trend-Analysen
- Support für: Fusion Applications, E*Business Suite, Siebel, JD Edwards, PeopleSoft, Weblogic Portale, Flexcube, ADF- und Forms-Applikationen



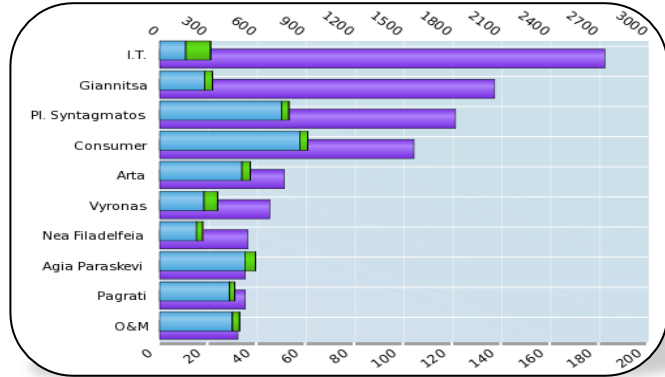
Session activity	Page load time (s)
Applications Functional Core	6,7
Applications Functional Core	1,4
Applications Functional Core	0,7
Applications Functional Core	0,4



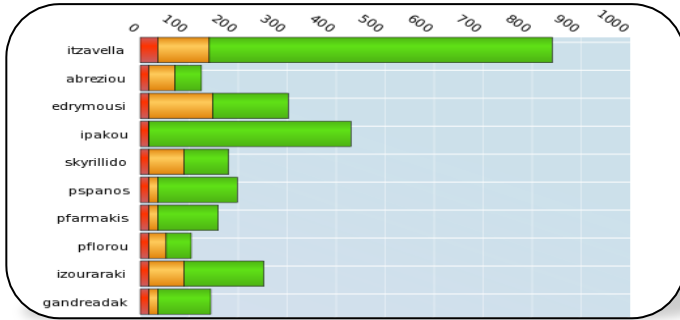
Real User Experience Insight - Dashboard



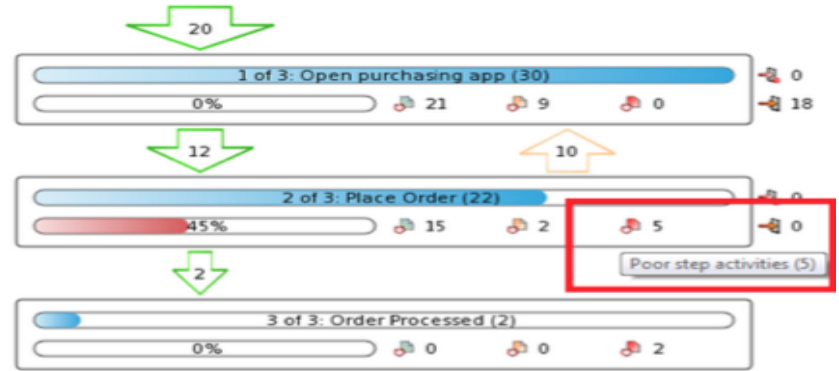
Real User Experience Insight - Berichte



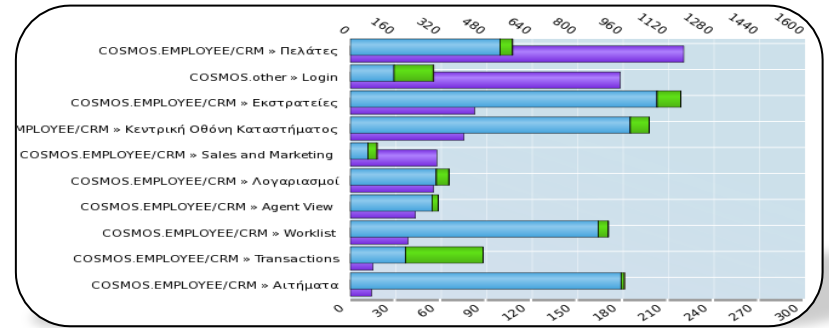
Datacenter and Network performance



Report Enduser E-to-E Performance



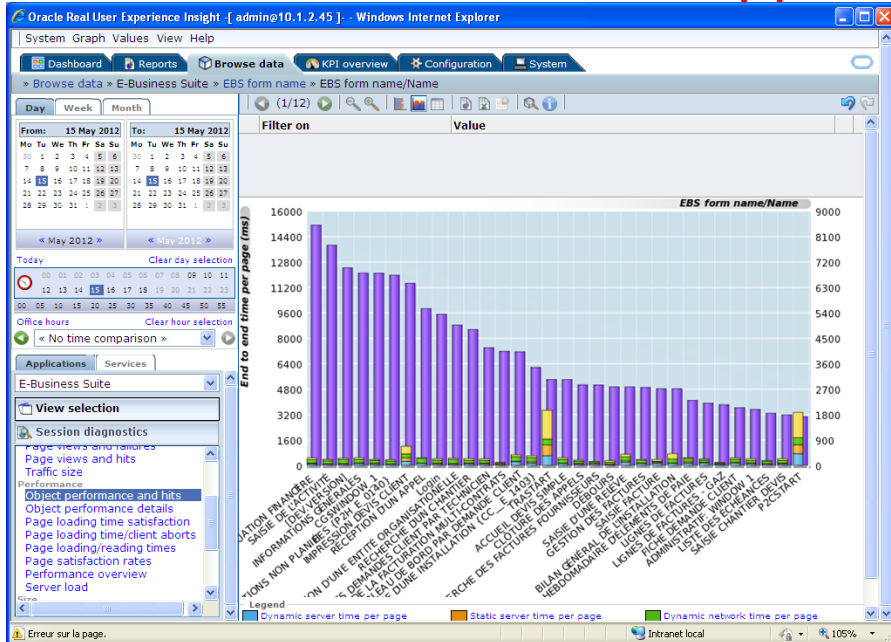
Transaction Funnel



Reporting of End-User Activity & Performance

Real User Experience Insight (RUEI)

... für Oracle Forms-Applikationen



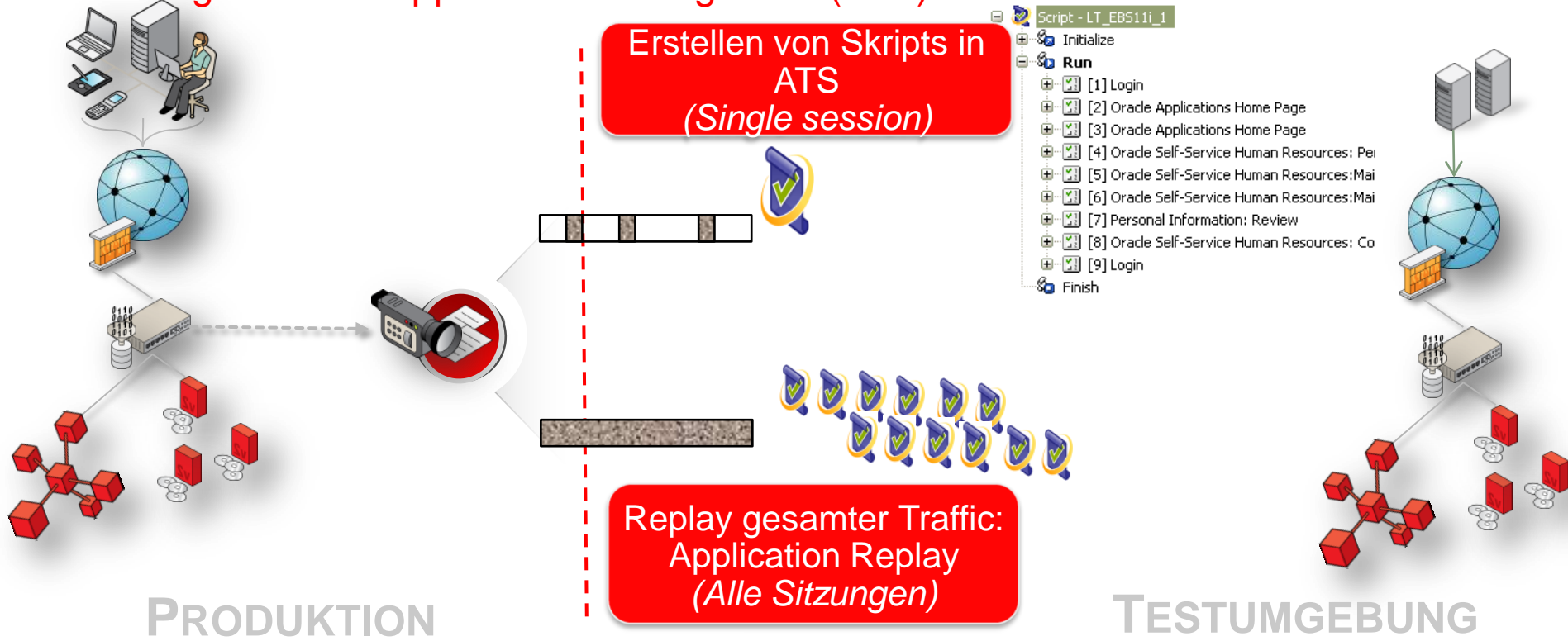
Application/Page Group	EBS.per » Enter Personal Inform	
Application/Name	Human Resources(EBS)	
Application/Page Name	Page Views	Application Hits
EBS.per » PERWSEPI » Selection:Textfield Name= Last	62	62
EBS.per » PERWSEPI » pressed:Button	39	76
EBS.per » PERWSEPI » activated:Button	33	33
EBS.per » PERWSEPI » Cursor position:Textfield Benefit Group	24	36
EBS.per » PERWSEPI » unidentified action	20	27
EBS.per » PERWSEPI » closed:Formwindow Competence Profile	14	14
EBS.per » PERWSEPI » Pick element:Lov Navigation Options	14	21
EBS.per » PERWSEPI » Scroll through list:Lov Navigation Options	14	28
EBS.per » PERWSEPI » activated:Formwindow People	14	14
EBS.per » PERWSEPI » pressed:Button F	14	14
EBS.per » PERWSEPI » Search:Lov Find People	14	14
EBS.per » PERWSEPI » Selection:Textfield Office	13	19
EBS.per » PERWSEPI » closed:Formwindow Special Information	7	7
EBS.per » PERWSEPI » Selection:Textfield Name	7	7
EBS.per » PERWSEPI » closed:Formwindow Assignment	7	7
EBS.per » PERWSEPI » Scroll through list:Lov Find People	7	7
EBS.per » PERWSEPI » Cursor position:Textfield Competence	7	14
EBS.per » PERWSEPI » deactivated:Textfield Birth Date	7	7
EBS.per » PERWSEPI » deactivated:Textfield Name= Last	7	7

Lesbare Aktionsbestandteile

Überwachung der Kommunikation:
Forms-Bezeichnungen direkt vom Forms Server (Forms 11g R2):

Real User Experience Insight (RUEI)

Integration mit Application Testing Suite (ATS)



RUEI-Unterstützung für Forms-Applikationen

E*Business Suite / Forms

- ermöglicht die Analyse der Forms-Messages

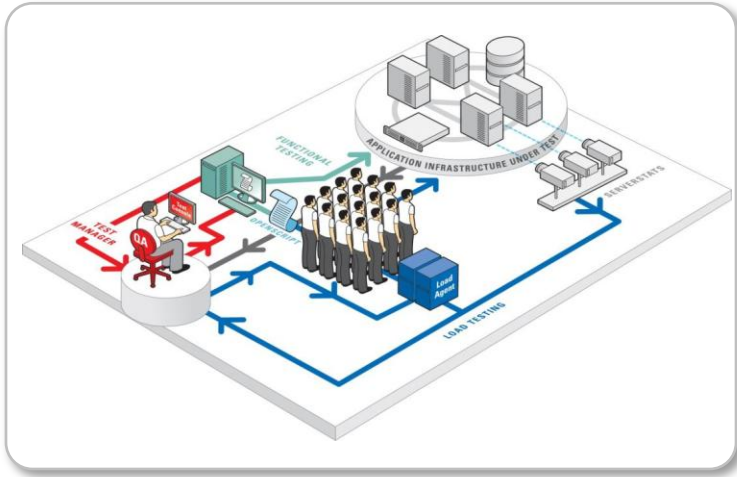
Oracle Forms 11g, Release 2

- Built-in *message()* mit zwei neuen Konstanten
 - RUEI_BEGIN
 - RUEI_END
 - ⇒ ermöglicht die Markierung von fachlichen Tansaktionen
- Umgebungsvariable `FORMS_RUEI_SEND_FORM_NAME`
 - sendet den Modul-Namen als Teil der Nachrichten
 - ⇒ ermöglicht eindeutige Identifizierung von Forms-Objekten (Window)
- Monitoring der Forms ohne Instrumentierung möglich



Test von Forms- und anderen Web-Applikationen

Oracle Application Testing Suite (ATS)



- Support für
 - Funktions- / Regressions-Tests
 - Last- / Performance-Tests
 - Test Management
 - Web, Siebel, Forms/EBS, ADF, WebServices
- Reduzierte Scripting Aufwände ~50%
- Automatisierte Skripterstellung
 - Last- / Performanceskripte können von RUEI generiert werden
- Integration mit EM Grid Control Diagnostic
 - JVM Diagnostic der Middle - Tier
 - DB Profiles für Oracle Datenbanken

Oracle Application Testing Suite (ATS)

Komponenten und Acceleratoren

Modules

Web



Load

Functional

Siebel



Load

Functional

Forms



Load

Functional

ADF



Load

Functional

Web

Services

Load

Functional

...

Foundation

ORACLE

OpenScript Framework (API)



Eclipse Platform

eclipse



Weiterführende Informationen

- Oracle Real User Experience Insight
<http://www.oracle.com/technetwork/oem/uxinsight/index.html>
- Oracle Application Testing Suite
<http://www.oracle.com/technetwork/oem/app-test/etest-101273.html>

