

ORACLE

Hardware and Software

ORACLE®

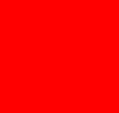
Engineered to Work Together



ORACLE®

Forms von A - Z

Jürgen Menge / Wolfgang Kriebel / Christian Kühne
Oracle Deutschland B.V. & Co. KG



The following is intended to outline our general product direction. It is intended for information purposes only, and may not be incorporated into any contract. It is not a commitment to deliver any material, code, or functionality, and should not be relied upon in making purchasing decisions.

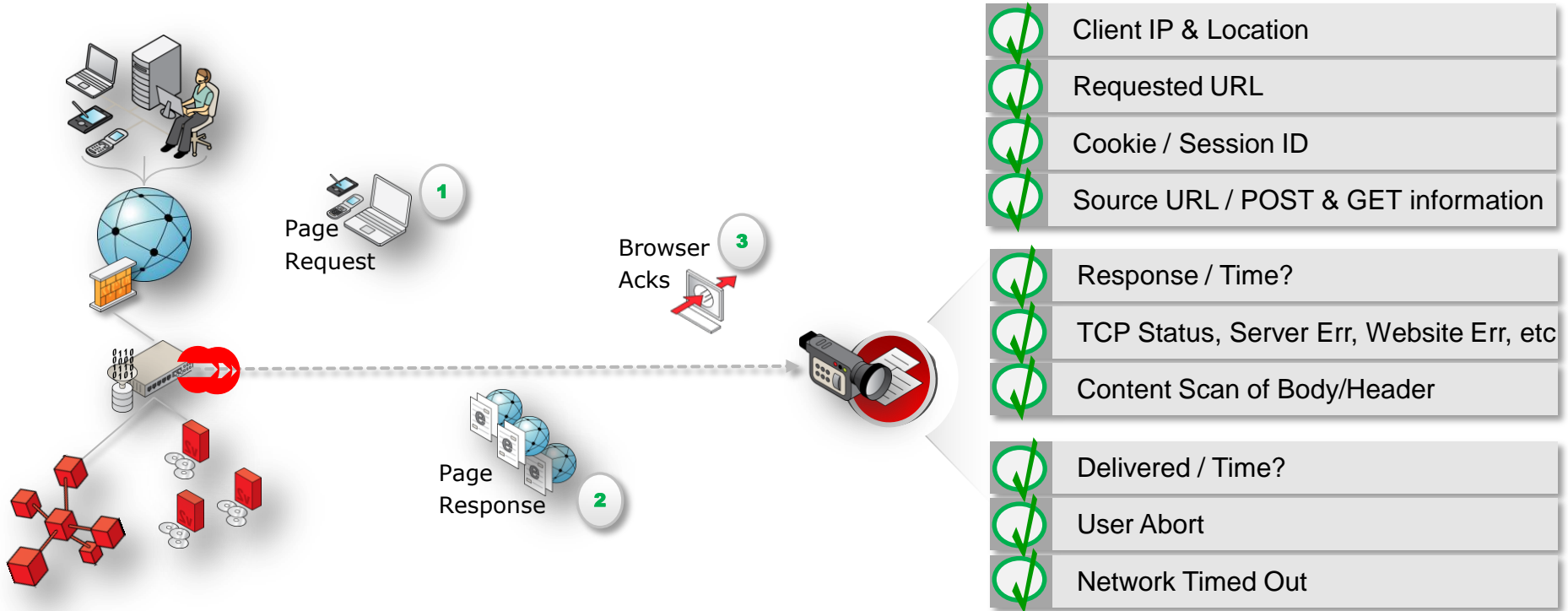
The development, release, and timing of any features or functionality described for Oracle's products remains at the sole discretion of Oracle.



Monitoring und Test von Forms-Applikationen

Real User Experience Insight (RUEI)

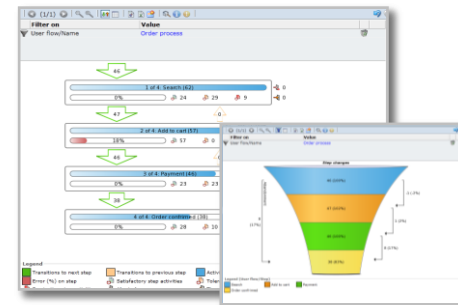
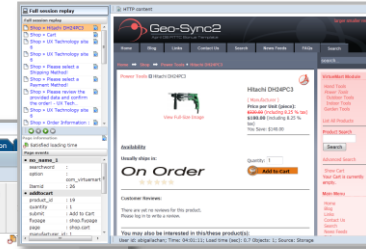
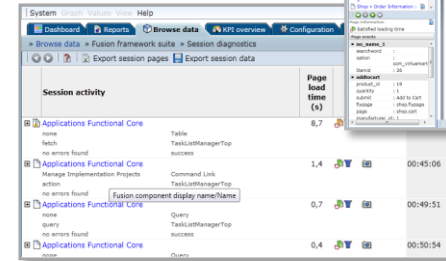
Aufzeichnen der Netzwerk-Aktivität



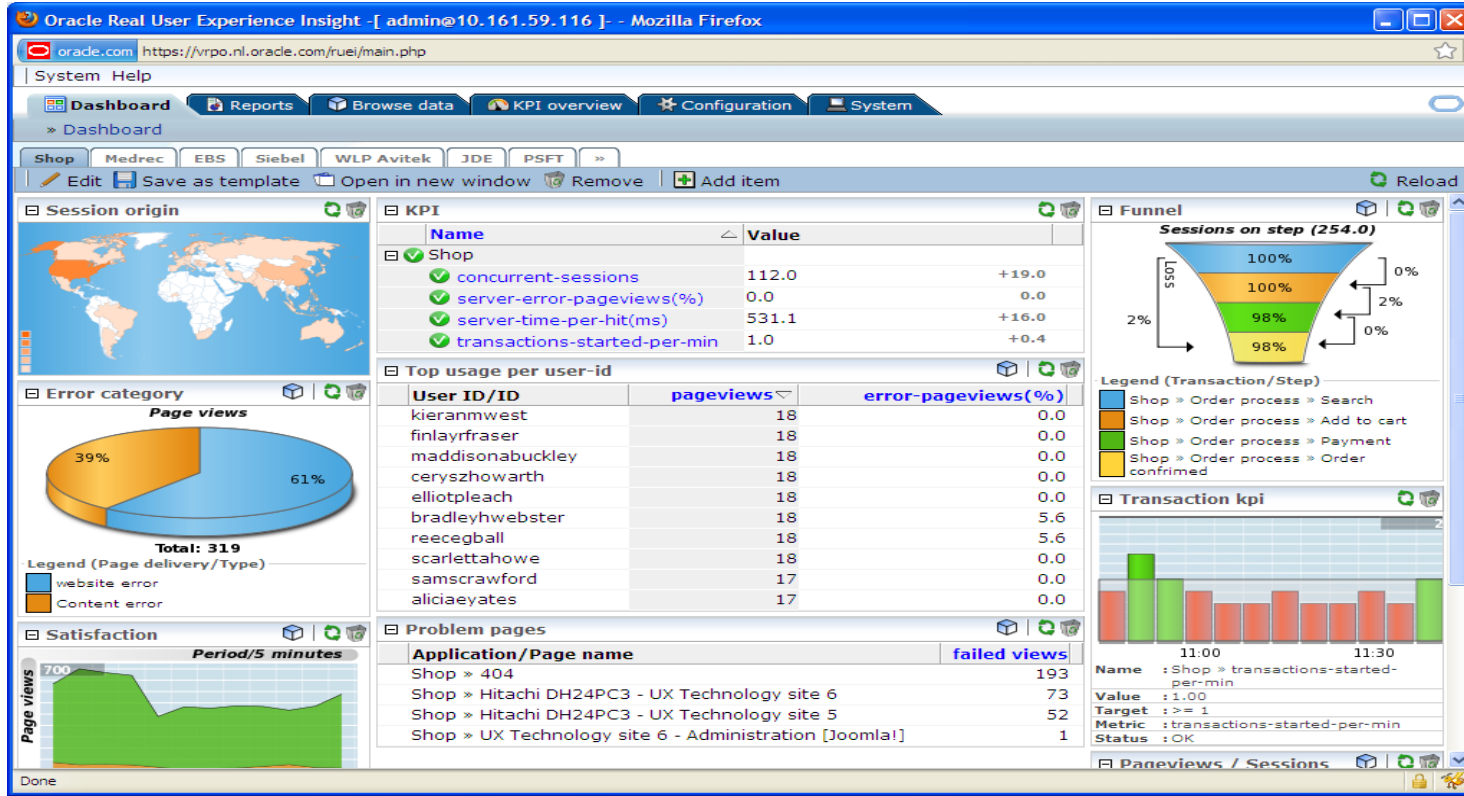
Real User Experience Insight (RUEI)

Auswertungen

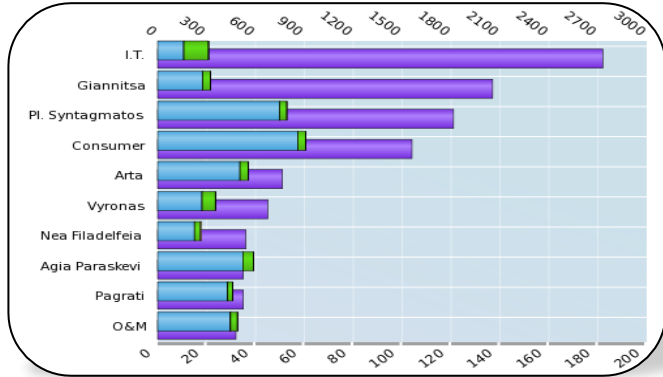
- Standort-bezogene Auswertungen
- Dashboards
- Überwachung von KPI und SLA
- Alerts
- Abspielen von Benutzer-Sessions
- Performance-Analysen von Prozessen
- Trend-Analysen
- Support für: Fusion Applications, E*Business Suite, Siebel, JD Edwards, PeopleSoft, Weblogic Portale, Flexcube, ADF- und Forms-Applikationen



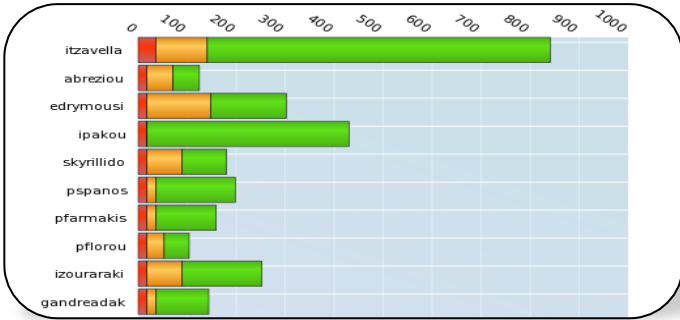
Real User Experience Insight - Dashboard



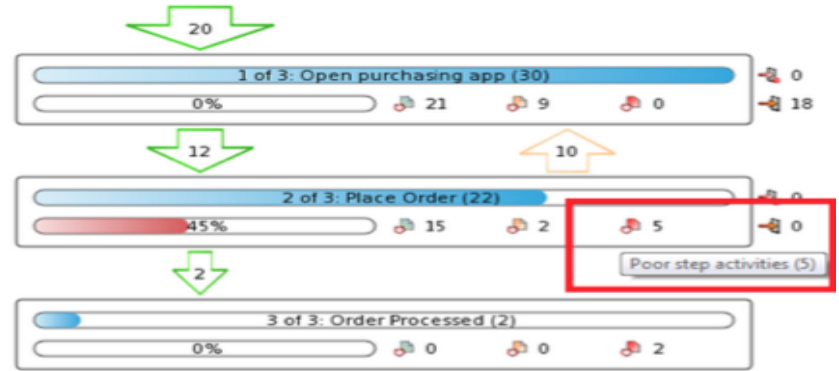
Real User Experience Insight - Berichte



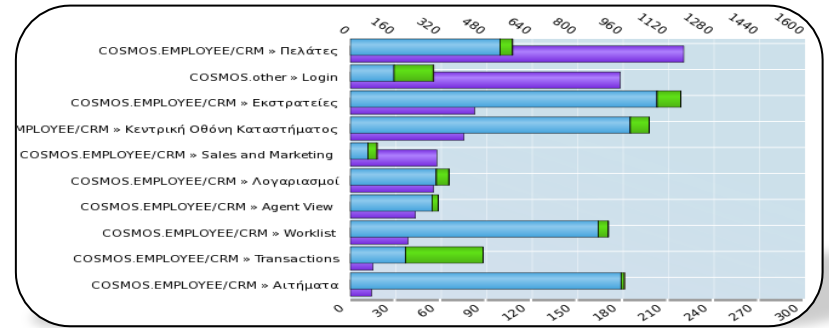
Datacenter and Network performance



Report Enduser E-to-E Performance



Transaction Funnel

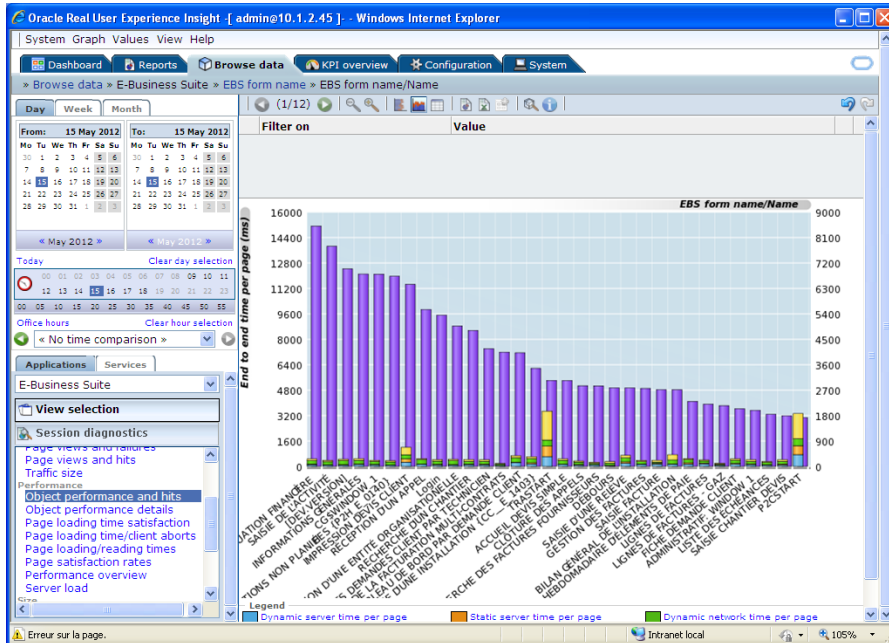


Reporting of End-User Activity & Performance



Real User Experience Insight (RUEI)

... für Oracle Forms-Applikationen



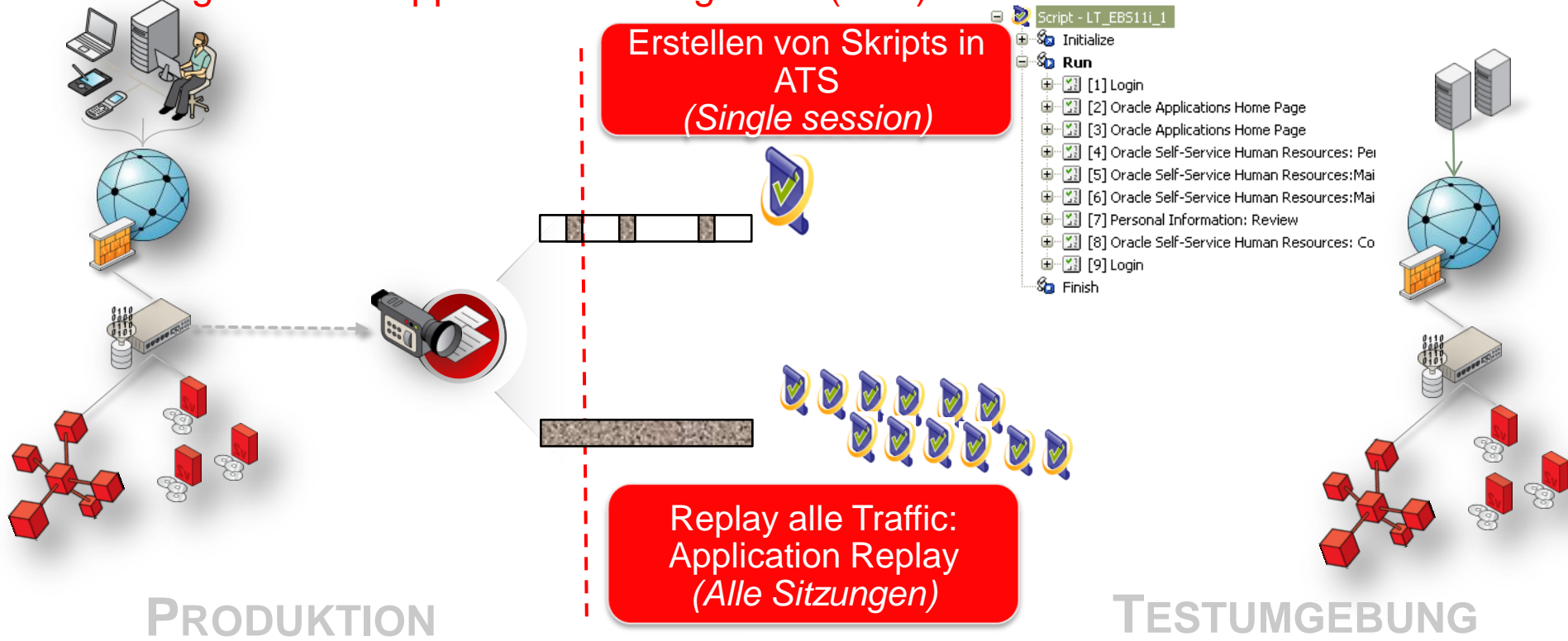
Application/Page Group	EBS.per » Enter Personal Inform Human Resources(EBS)	
Application/Page Name	Page Views	Application Hits
EBS.per » PERWSEPI » Selection:Textfield Name= Last	62	62
EBS.per » PERWSEPI » pressed:Button	39	76
EBS.per » PERWSEPI » activated:Button	33	33
EBS.per » PERWSEPI » Cursor position:Textfield Benefit Group	24	36
EBS.per » PERWSEPI » unidentified action	20	27
EBS.per » PERWSEPI » closed:Formwindow Competence Profile	14	14
EBS.per » PERWSEPI » Pick element:Lov Navigation Options	14	21
EBS.per » PERWSEPI » Scroll through list:Lov Navigation Options	14	28
EBS.per » PERWSEPI » activated:Formwindow People	14	14
EBS.per » PERWSEPI » pressed:Button F	14	14
EBS.per » PERWSEPI » Search:Lov Find People	14	14
EBS.per » PERWSEPI » Selection:Textfield Office	13	19
EBS.per » PERWSEPI » closed:Formwindow Special Information	7	7
EBS.per » PERWSEPI » Selection:Textfield Name	7	7
EBS.per » PERWSEPI » closed:Formwindow Assignment	7	7
EBS.per » PERWSEPI » Scroll through list:Lov Find People	7	7
EBS.per » PERWSEPI » Cursor position:Textfield Competence	7	14
EBS.per » PERWSEPI » deactivated:Textfield Birth Date	7	7
EBS.per » PERWSEPI » deactivated:Textfield Name= Last	7	7

Lesbare Aktionsbestandteile

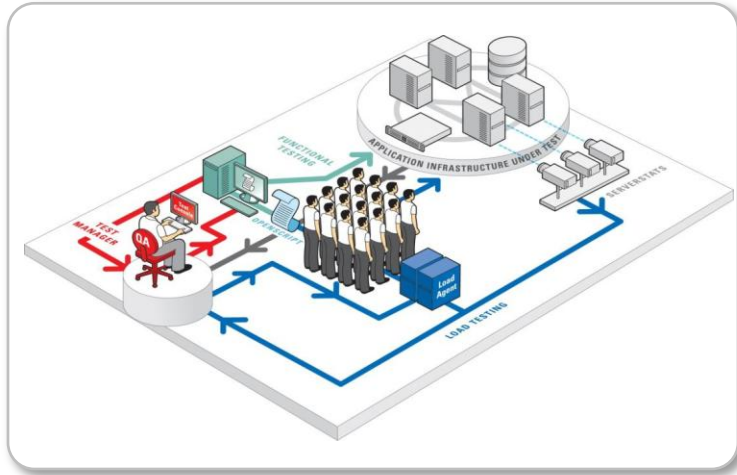
Überwachung der Kommunikation:
Forms-Bezeichnung direkt vom Forms Server (Forms 11g R2):

Real User Experience Insight (RUEI)

Integration mit Application Testing Suite (ATS)



Oracle Application Testing Suite (ATS)

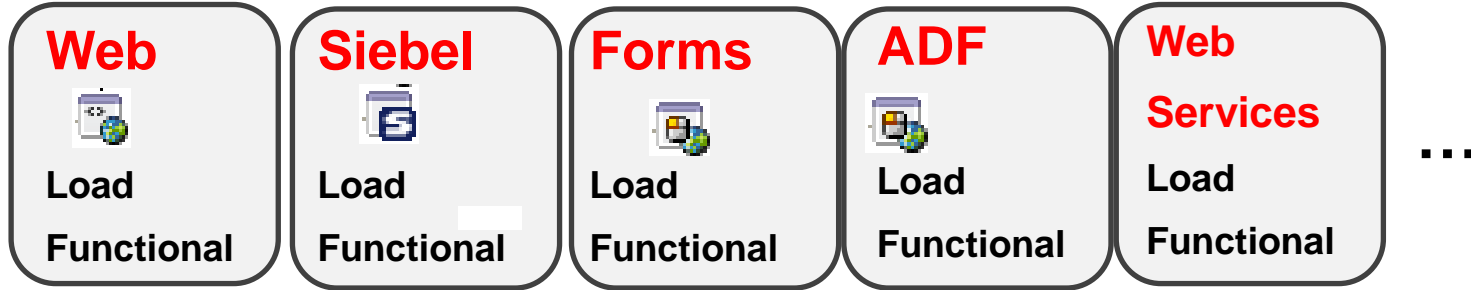


- Support für
 - Funktions- / Regressions-Tests
 - Last- / Performance-Tests
 - Test Management
 - Web, Siebel, Forms/EBS, ADF, WebServices
- Reduzierte Scripting Aufwände ~50%
- Automatisierte Skripterstellung
 - Last- / Performanceskripte können von RUEI generiert werden
- Integration mit EM Grid Control Diagnostic
 - JVM Diagnostic der Middle - Tier
 - DB Profiles für Oracle Datenbanken

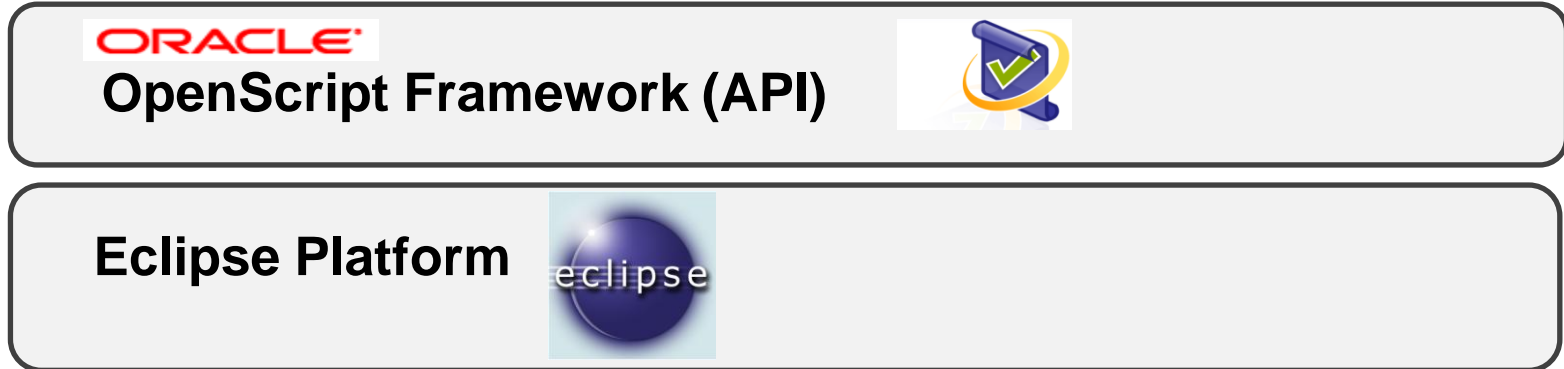
Oracle Application Testing Suite (ATS)

Komponenten und Acceleratoren

Modules



Foundation



A large, 3D-rendered graphic of the letters 'Q&A' in a vibrant red color. The letters are thick and have a glossy finish, casting soft shadows on a light gray surface below them. The ampersand is smaller and positioned between the 'Q' and the 'A'. The background is a clean, light gray gradient.

Hardware and Software

ORACLE®

Engineered to Work Together

ORACLE®

ORACLE®